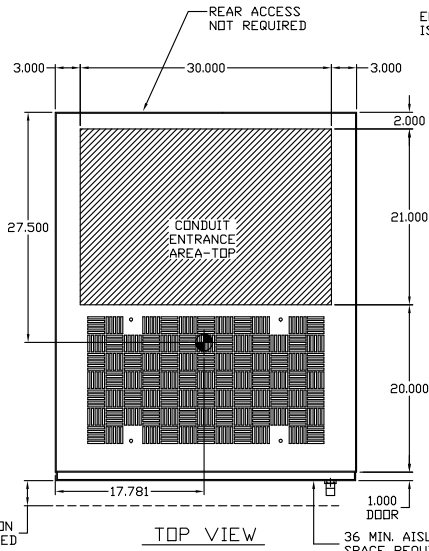


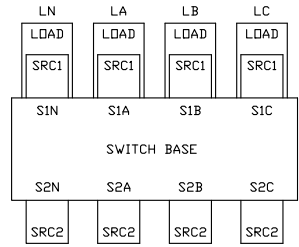
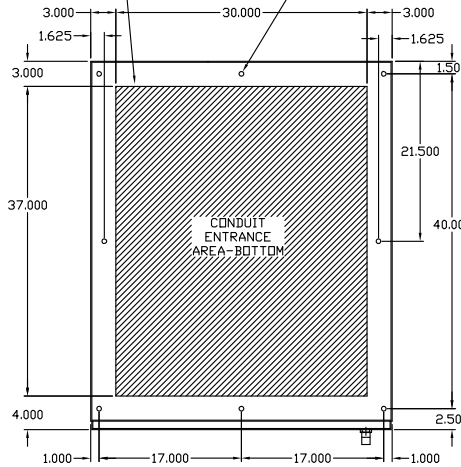
LUG SCHEDULE

SWITCH SIZE	CABLE CONNECTION SIZE SOURCE 1, LOAD & SOURCE 2 PER PHASE & NEUTRAL	GROUND	ESTIMATED NET WEIGHT (lbs.)
3000A	(8) #2-600MCM	(24) #6-250MCM	1700



BOTTOM IS OPEN  
ENTIRE OPEN AREA  
IS AVAILABLE FOR  
CONDUIT ENTRY

0.625 DIA (8)  
BOLT DOWN HOLES



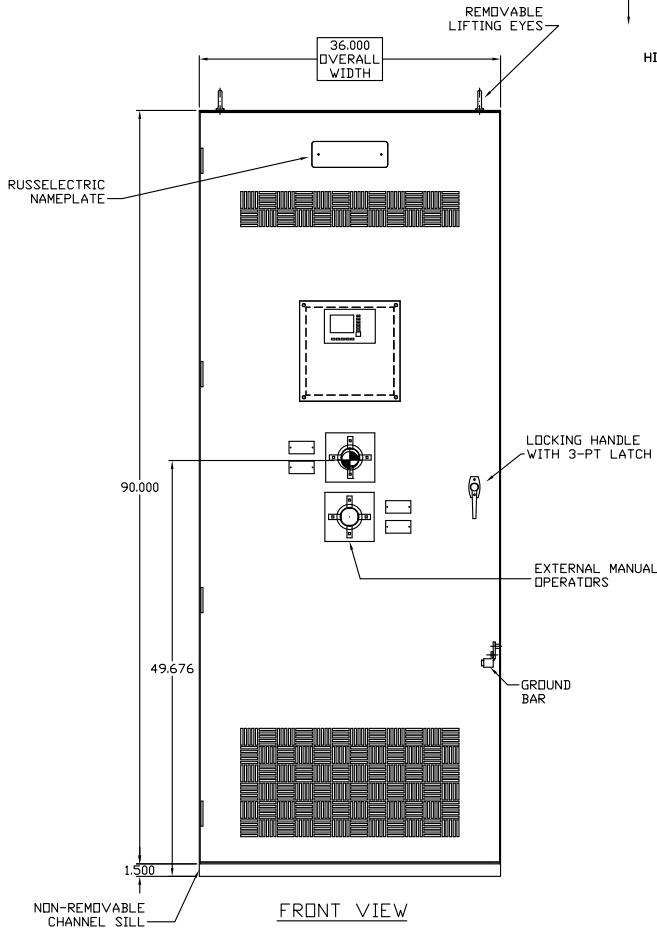
3.000  
MAXIMUM EXTENSION  
OVER DOOR MOUNTED  
DEVICES

TOP VIEW

36 MIN. AISLE  
SPACE REQUIRED

BOLT DOWN PATTERN &  
BOTTOM CONDUIT PLAN

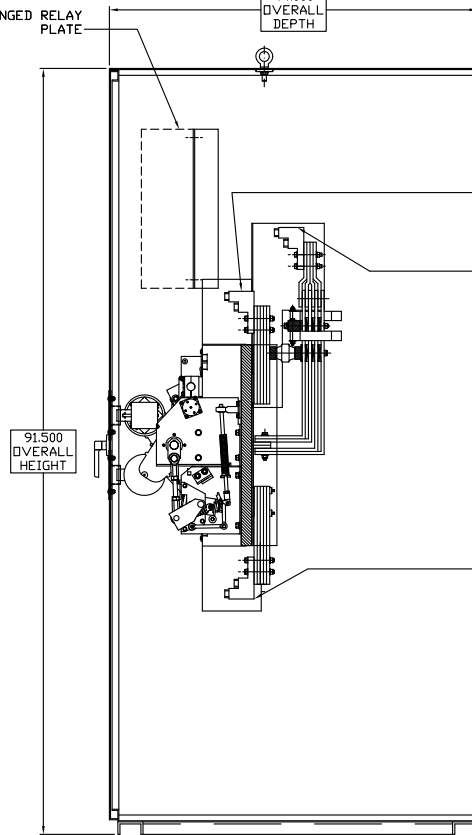
POWER CONNECTION LABELS



FRONT VIEW

HINGED RELAY  
PLATE

44.000  
OVERALL  
DEPTH



SECTION VIEW  
OF TRANSFER  
SWITCH

SOURCE 1 FEED  
CABLE CONNECTIONS

LOAD CABLE  
CONNECTIONS

SOURCE 2 FEED  
CABLE CONNECTIONS

GENERAL NOTES:

- ENCLOSURE FABRICATED FROM SHEET STEEL IN ACCORDANCE WITH UL STANDARD 508.
- ALL STEEL PARTS SHALL BE PREPARED FOR PAINTING BY A FIVE STEP CLEANING, PHOSPHATIZING AND SEALING PROCESS. THE PARTS SHALL THEN BE PAINTED ASA #61 GRAY, UTILIZING POLYESTER POWDER COATING APPLIED BY THE ELECTROSTATIC METHOD AND CURED IN A BAKING OVEN. THIS FINISH IS SUITABLE FOR OUTDOORS, AS WELL AS INDOOR APPLICATIONS.
- LUG SIZES SPECIFIED ARE MECHANICAL TYPE SUITABLE FOR CU/AL CABLE.
- ALL DIMENSIONS ARE IN INCHES (1 INCH = 2.54 CM)
- FOR SEISMIC APPLICATIONS, ALL BOLT DOWN HARDWARE MUST BE GRADE 5, 1/2" BOLTS TORQUED TO 60 FT LBS.

SWITCH SIZE	NO. OF POLES	QUANTITY	SPECIAL MARKINGS
3000A	4	1	

CERTIFIED BY: DATE:

**Russelectric**  
SOUTH SHORE PARK, HINGHAM, MA 02043  
HTTP://WWW.RUSSELECTRIC.COM

NEMA 1 3000A 4P (RTS30)  
ATS FREESTANDING ENCLOSURE

DFTM.	MDM	3.13.09	DWG. 83S0035D34 B
CHKD.	JTL	03/07/11	
APPD.			SHEET NO. 1 CONT'D ON SHEET NO. 1 REV